

Clare Crombie
Gabriele Kern
Gill White
Juliet Bankes
Lisa Bates
Louise Shaw
Marina Price

2019

MF Collective was formed in 2019. We are an intergenerational group of 7 women who live scattered across Oxfordshire. We work together in Collective purpose to support, stimulate, motivate, challenge and share.

We bonded whilst attending the Continuing Practice Course at Warehouse Art School, OVADA. During this time we worked collectively on a project that required us to respond to the exhibition "*Intrepid Women*" <https://www.prm.ox.ac.uk/event/intrepid-women> at the Pitt Rivers Museum in March 2019. The experience of responding to a theme, with a committed small group, helped us to see that in continuing to work together we would access fields that are much harder to plough individually.

Our group size fits the dining table. We gather bringing food to the host table. We settle, share and unfurl. The act is both physical and metaphorical.

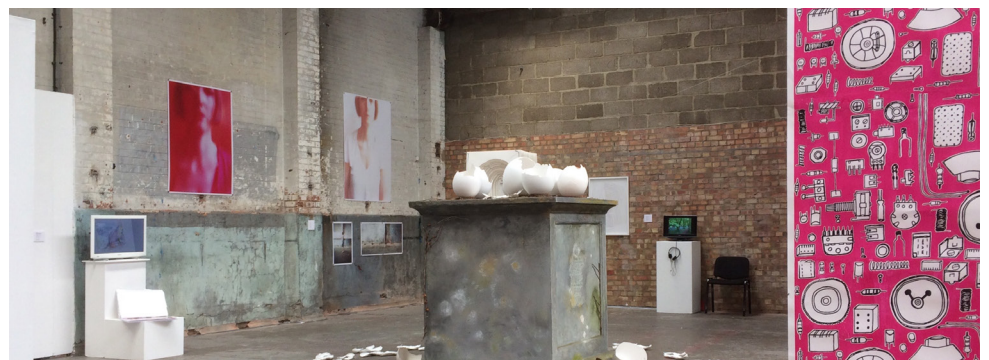
From our shared wealth of mind and life, we work well together with a kind of intuitive ease.

Threads emerge from conversations, weave through small acts of collective making to reveal the overarching theme and intention for our next larger public engagement. Our project brief only anchors the beginning and the end points. The space in the middle is free for each of us to explore in our own way, across mediums and disciplines of individual choice .

These sharings grew into our first ambitious group exhibition "*Just Add Water*" at Castle Quay shopping centre in Banbury (July 2021). Our purpose was to give heart through our art to empty spaces. Creating works inspired by Banbury for Banbury.

We initiated a relationship with Banbury's Castle Quay Shopping Centre, who enthusiastically welcomed us, gifting a prime retail unit to use as we wished. Our new initiative has since been embraced and adopted by the shopping centre, which now offers the unit to artists for exhibitions and events.

Although we were apart during COVID lockdowns we were still physically connected by the water flowing through Oxfordshire's waterways. This led to the idea of gathering mud from the river bank near the source of the river to craft tiny vessels and then further evolved into making paper origami boats from recycled prints.



Final Show WAS5 OVADA

Collective Fundamental / Manifesto

Our strong commitment to the collective and the collective process is rooted in care and respect for each other. We support and learn from each other, whilst recognising and acknowledging fellow feelings and interconnectedness. We value openness to new ideas and cross pollination.

We openly share our skills and responsibilities.

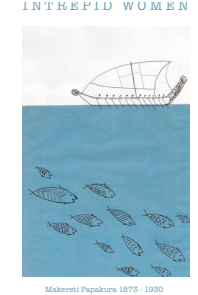
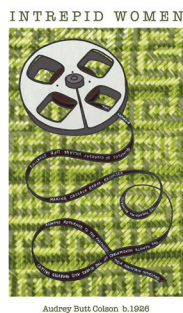
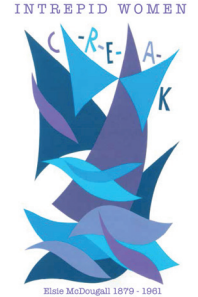
We embrace the unexpected and allow space to be surprised.

Tea towel designs responding to *Intrepid Women* exhibition at Pitt Rivers Museum

We were inspired by the histories and collections of the six intrepid women anthropologists featured in the *Intrepid women* exhibition (Pitt Rivers Museum 2019), producing a response based on our imaginary 'conversations' with these women. We reflected, in our work, something of the legacies of their lives and the physical and social obstacles they overcame in order to make their research.

The tea towels were featured and sold in the Museum shop

2019



2020

Artists Salon. An online crit of our work made during lockdown.
<https://youtu.be/AsU39Zuppvo>

2021

Castle Quay Banbury: *Just Add Water*. An exhibition in an empty retail space in Castle Quay Banbury. A response to the town and histories of Banbury.

Just Add Water



2021

Cyanotype workshop

Cyanotype experimental workshop in public space, Annie's Tea Room, Thrupp



Market Stall

East Oxford community and farmers market

Christmas Market: East Oxford community and farmers market



2022

Future Events

Retail space Templars Square, Cowley

Window exhibition Stanton St John. September